

# RE

*Reliance Engineering*

## RELIANCE ENGINEERING

We Mean Quality with Excellence



- Plant Maintenance
- Engineering Consultancy
- Ventilation & Air Movement
- Total Project Implementation
- Manufacturers' Representative
- Civil Engineering & Construction
- Mechanical Erection & Fabrication
- Electrical & Instrumentation Engineering

[www.relianceengineeringbd.com](http://www.relianceengineeringbd.com)

## About Us

Reliance Engineering is a pure engineering service oriented company. It mainly concentrates on consulting services, construction, manufacturing, marketing and erection of industrial projects. Technical expertise and professional competence are the assets of Reliance Engineering. Reliance Engineering applies its know-how in various phases of the industrial project. Reliance Engineering boasts of an experienced team of engineering (Civil, Mechanical and Electrical), administrative and financial managers that complement the work of technicians. They provide assistance at each stage of the project and play an active role in achieving the goals.

## Our Mission & Vision

We support the client throughout the entire project lifecycle & providing the custom-made solutions until completion with all the proper rules. We are committed to be in leading position by maintaining the highest standards in the practice of engineering, design, technology & automation.

## Our Belief

This is our strong belief that our services are understandable & of the highest quality. Empowering employees and encouraging them through leadership, within an ethic-driven corporate culture are key values that we highly support. Our value system is committed to excellence in delivering quality products and customer service.



*Reliance Engineering*

## Welcome Message from The CEO



Dedication, foresight and strategy are key components in a journey to success. It is my pleasure & honor to welcome you to the diverse endeavors of “**Reliance Engineering (RE)**”.

We have been successfully operating for over 21 years in different districts of Bangladesh. RE aims to provide clients with a comprehensive and professional solution, maintaining industry standards & ensuring on-time delivery. The strategic structure of **RE** is based on adding value for our clients, suppliers and our highly qualified team. Our considerable accomplishments and successes are attributable to our most valuable asset, our people, whose hard work and commitment have been fundamental in bringing the company to its current position.

We operate a customer-driven business, and therefore I would like to thank all of our many, varied clients for their dedicated and loyal support over the years. Together with our clients and stakeholders we are determined to further excel in every market we serve.

**Engr. Ajoy Sankar Parial (Shankar)**

A handwritten signature in black ink, appearing to be 'Ajoy Sankar Parial'.

**Managing Partner & CEO**

## OUR EXPERTISE

### Civil Engineering:

- Design
- Estimation
- Soil test
- Survey
- Pile load test
- RCC work
- Base foundation
- Brickwork
- Complete project civil work



# Textile Mill

## Unitex Group-Grand Spinning Mills Ltd.

Civil Construction Work in Grand Spinning Mills Ltd, Barabkundu, Chattogram.



## Unitex Group- HS Composite Textiles Ltd.

Civil Construction Work in H.S.Textile Mills Ltd.

Chatori Chowmohoni, Anwara, Chittagong.



# Chemical Plant

## Berger Paints Bangladesh Limited:

Civil Construction Work of Sub Structure RCC For 18 nos Silo at Mirsharai, Chattogram



## Berger Paints Bangladesh Limited:

1. Civil & Steel Construction Work, Plumbing work and Electrical work of Mezzanine WB Building
2. Civil & Steel Construction Work of SFG Tank at Nabinagar, Savar.



# Cement Factory

## Heidelberg Materials Bangladesh PLC :

Civil works of 3000MT capacity Steel  
Fly-Ash Silo in Scan Cement.



# Industrial Jetty



**Heidelberg Materials Bangladesh PLC :**  
Expansion of Jetty in Ruby Cement, Patanga, Chattogram.



**Green Town LPG:** Construction of Dolphin Jetty in Baniashanta, Dacope, Khulna

# Residential Building

**Unitex Group- Khulshi, Chattogram:**

Civil Construction work of 10-storied Khulshi House.

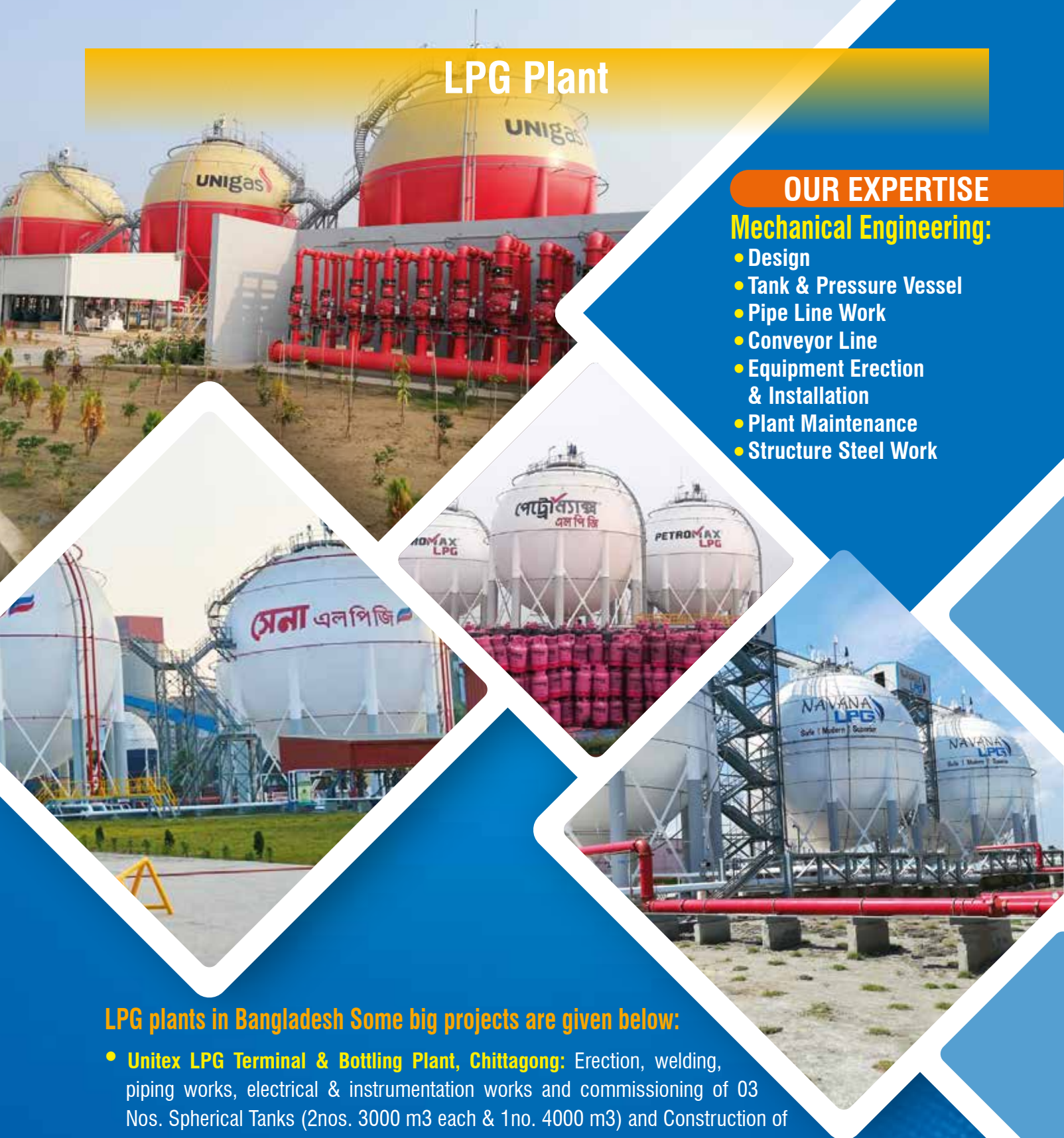


# LPG Plant

## OUR EXPERTISE

### Mechanical Engineering:

- Design
- Tank & Pressure Vessel
- Pipe Line Work
- Conveyor Line
- Equipment Erection & Installation
- Plant Maintenance
- Structure Steel Work



### LPG plants in Bangladesh Some big projects are given below:

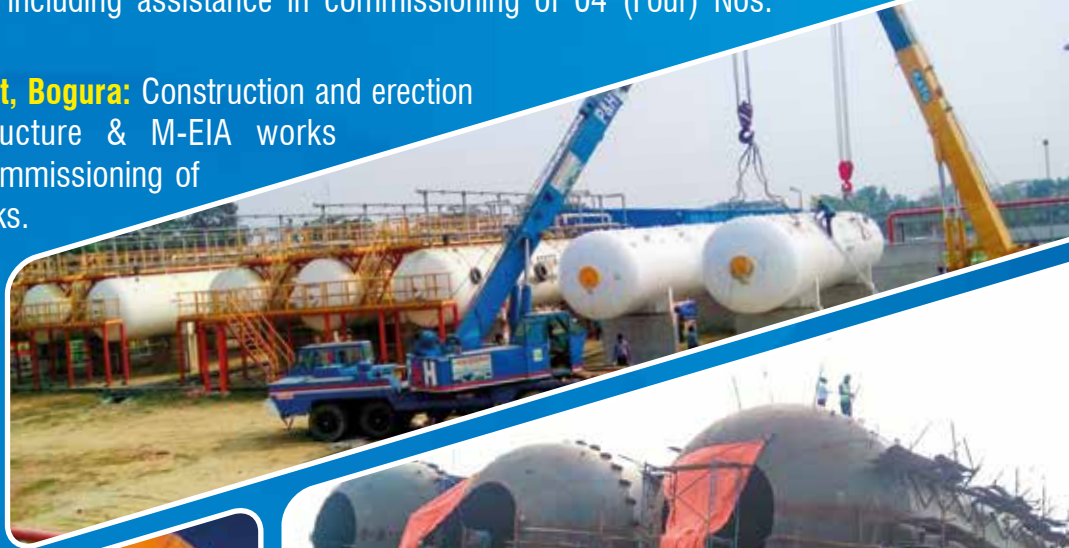
- **Unitex LPG Terminal & Bottling Plant, Chittagong:** Erection, welding, piping works, electrical & instrumentation works and commissioning of 03 Nos. Spherical Tanks (2nos. 3000 m<sup>3</sup> each & 1no. 4000 m<sup>3</sup>) and Construction of Cylinder Manufacturing Plant(CMP).
- **SKS LPG Terminal & Bottling Plant, Mongla, Bagerhat:** Erection, welding, piping works, electrical & instrumentation works and commissioning of 02(Two) Nos. Spherical Tanks (3500m<sup>3</sup> each).
- **Navana LPG Terminal & Bottling Plant, Mongla, Bagerhat:** Erection, welding, piping works, electrical & instrumentation works and commissioning of 3 Nos. Spherical Tanks (3000m<sup>3</sup> each).
- **Petromax LPG Terminal & Bottling Plant, Mongla, Bagerhat:** Erection, welding, piping works, electrical & instrumentation works and commissioning of 03 (Three) Nos. Spherical Tanks (2 nos. 4000 m<sup>3</sup> each & 1 No. 3000 m<sup>3</sup>).



- G Gas LPG Terminal & Bottling Plant, Chalna, Khulna:** Erection, welding, piping works, electrical & instrumentation works and commissioning of 03 Nos. Spherical Tanks (2nos. 3000 m3 each & 1no. 3800 m3) .
- Omera LPG Terminal & Bottling Plant, Mongla, Bagerhat:** Erection, welding, piping works, electrical & instrumentation works and commissioning of 03 (Three) Nos. Spherical Tank ( 2nos. 3000 m3 each & 1 No. 3800 m3).
- Europetro LPG Terminal & Bottling Plant, Barabkund, Chattogram:** Erection, welding, piping works, electrical & instrumentation works and commissioning of 01 (One) No. Spherical Tank (3000 m3).
- Green Town LPG Terminal & Bottling Plant, Baniashanta, Khulna:** Erection, welding, piping works, electrical & instrumentation works and commissioning of 01 (One) No. Spherical Tank (5000 m3).
- LAUGFS LPG Terminal & Bottling Plant, Mongla, Bagerhat:** Erection, welding, piping works, electrical & instrumentation works and commissioning of 01 (One) No. Spherical Tank (6000 m3) & expansion of firefighting system including mechanical works of firefighting pumps shelter.

## LPG Satellite Plants:

- **BM Energy LPG Satellite Plant, Chalna, Khulna:** Erection, welding, piping works, electrical & instrumentation works and commissioning of 03 (Three) Nos. mounded bullet tanks (1000 MT each).
- **BM Energy LPG Satellite Plant, Kaliganj, Dhaka:** Erection, welding, piping works, electrical & instrumentation works and commissioning of 02 (Two) Nos. mounded bullet tanks (1000 MT each).
- **G Gas LPG Satellite Plant, Rugganj, Dhaka:** Installation, piping works, electrical & instrumentation works and commissioning of 03 (Three) Nos. mounded bullet tanks.
- **Omera LPG Satellite Plant, Mirsoari, Chattogram:** Construction and erection of associated steel structure & M-EIA works including assistance in commissioning of 02 (Two) Nos. Bullet Tanks.
- **Omera LPG Satellite Plant, Ghorashal, Dhaka:** Construction and erection of associated steel structure & M-EIA works including assistance in commissioning of 04 (Four) Nos. Bullet Tanks.
- **Omera LPG Satellite Plant, Bogura:** Construction and erection of associated steel structure & M-EIA works including assistance in commissioning of 03 (Three) Nos. Bullet Tanks.
- **Navana LPG Satellite Plant, Ashulia, Dhaka:** Construction and erection of associated steel structure & M-EIA works including assistance in commissioning of 02 (Two) Nos. Bullet Tanks.



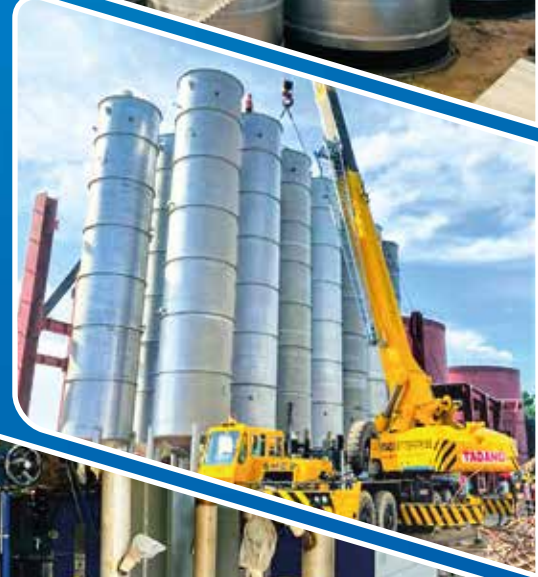
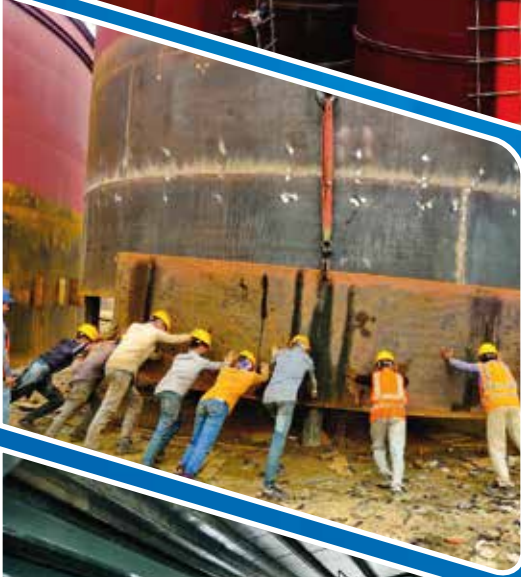
**RE**

*Reliance Engineering*

# Edible Oil Refinery Plant

## S. Alam Tank Terminal :

35 nos. Oil Tanks fabrication, installation, sandblasting, painting work, Piping & Instrumentation, Insulation Work at S. Alam Tank Terminal Ltd. , BFDC Road, Azimpara, Ichanagar, Karnaphuli, Ctg.



**RE**

*Reliance Engineering*

# Chemical Plant

## Confidence Sea Resources Ltd. (Confidence Salt) :

□ Erection & fabrication of 32 nos CS,SS,Clad material. □ Installation of 72 equipment (Centrifugal pump, Heat exchanger,Vapor compressor etc). □ Process Piping & Instrumentation work. □ Belt conveyor installation work □ Insulation work □ Commissioning work at West Gomdandi, Boalkhali, Chattogram.



## Berger Paints Bangladesh Limited :

Erection & fabrication of 18 nos CS & SS silo with hopper at National Economic Zone Mirsharai, Chattogram.



# Re-Rolling Mill

## Abul Khair Steel Mills Ltd.

Rolling Mill -02 Machineries Erection and Installation Works at Sitakunda, Chattogram.



## Abul Khair Steel Mills Ltd.

Water Treatment Plant (WTP) Machineries and Cooling Tower Installation at Sitakunda, Chattogram.



# Cement Factory

## Heidelberg Materials Bangladesh PLC :

Supply, fabrication & installation of Air slide along with Bucket Elevator at Ruby Cement, Chattogram.



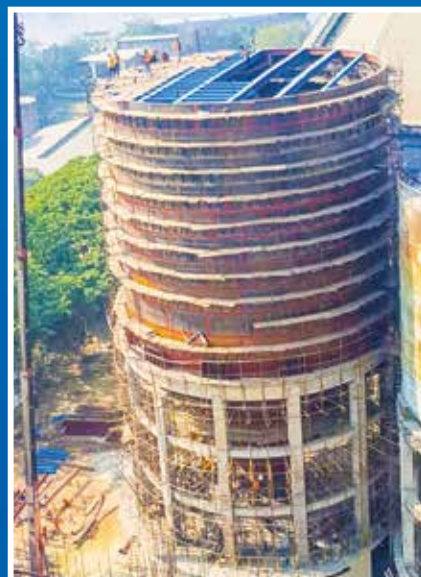
## Heidelberg Materials Bangladesh PLC :

Installation of Truck Auto Loader Machine (TLM) at Ruby Cement, Chattogram.



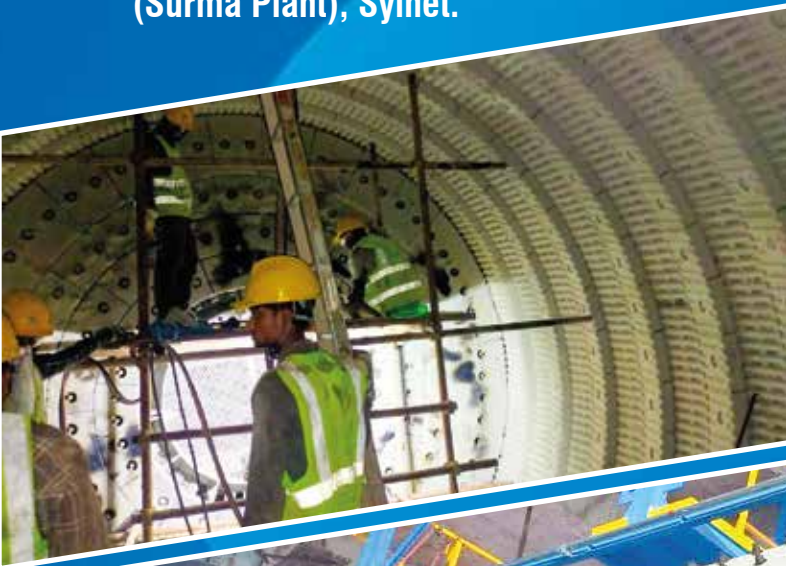
## Heidelberg Materials Bangladesh PLC :

Erection of 3000 MT capacity Steel Fly -Ash Silo at Scan Cement, Kanchpur.



## Lafarge Holcim Bangladesh Ltd.

Slide shoe bearing and chamber shell linear replacement  
at Lafarge Holcim Bangladesh Limited  
(Surma Plant), Sylhet.



## Confidence Cement Dhaka Ltd. (250 TPH Cement Mill [VRM])

Fabrication, Erection and Commissioning of Cement Grinding Unit, Mill Feed system, Hopper, Bin, Valve, Chute, Stair, platform, Gallery, Tower, Pipeline etc. at Danga, Palash, Norsingdi, Dhaka.





**Ruby Cement:** Fabrication, Erection & Commissioning of 04 Nos. Eco Hopper at Patanga, Chattogram.



**Mongla Cement Factory :** Fabrication, Erection & Commissioning of 01 No. Eco Hopper.

Nowadays, the whole world is conscious about environment. Everyone is trying to protect the environment for our better future. Eco Hopper is one of the equipment which plays very important role to protect our environment. We made some eco hoppers as part of this initiative .

## OUR EXPERTISE

### Electrical & Instrumentation Engineering:

- Cable laying
- Power distribution
- Distribution switchboards
- Electrical control panels
- Process & control systems
- Automation & Control
- PLC control system





## SAFETY MEASURES

Safety and Environmental considerations are an important part of our daily lives. Not only for our individual protection, but for the protection of others and the environment. In order to maintain a high level of knowledge and awareness, each employee and faculty member is issued a copy of a manual.

The additional actions take to manage health and safety should be set out in the arrangements section of our policy.

- Staff training
- Using signs to highlight risks
- Improved safety equipment, such as guards or additional personal protective equipment, including goggles, safety boots or high-visibility clothing
- Replacing hazardous chemicals with less harmful alternatives
- Improved lighting

# VALUABLE CLIENTS



# CONTRACT SIGNING



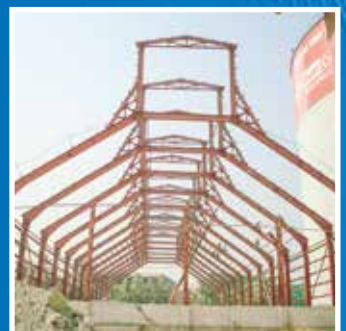
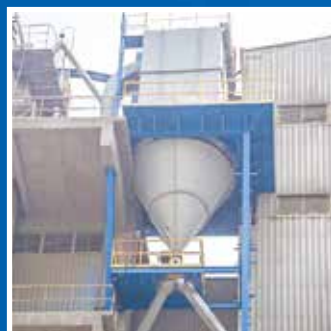
## EQUIPMENT RENTAL

Our dedicated team ensures timely and efficient delivery of equipment to your construction site, streamlining your operations with a commitment to customer satisfaction and industry expertise.



## DIVERSIONS OF WORK

- Market Study
- Feasibility Study
- Design, Overall Engineering & Project Development.
- Evaluation of Bids
- Negotiation & Preparation of Executed Contracts
- Control of the Plant Performance.
- Technical Assistance.
- Personal Training
- Supervision of the Plant Implementation & Start-up
- New Projects, Rehabilitation, Modernization & Extension of Existing Plant



**RE**

*Reliance Engineering*



# RELIANCE ENGINEERING

Aziz Chamber (4th Floor), 6, Jubilee Road, Enayet Bazar, Chattogram-4000, Bangladesh.

E-mail : [info@relianceengineeringbd.com](mailto:info@relianceengineeringbd.com), [reliance2005@hotmail.com](mailto:reliance2005@hotmail.com)

Tel : +88-01328-051545, +88-02333359222

Web : [www.relianceengineeringbd.com](http://www.relianceengineeringbd.com)